

Floor Plan

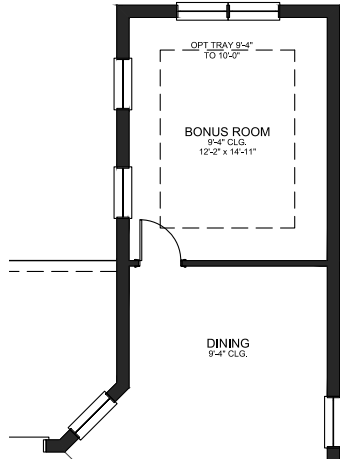
AREA TABULATION	
MAIN FLOOR:	1,874 S.F.
TOTAL A/C:	1,874 S.F.
GARAGE:	487 S.F.
LANAI:	203 S.F.
ENTRY:	90 S.F.
TOTAL UNDER ROOF:	2,654 S.F.

(727) 942-1117 • TampaHomeBuilder.com

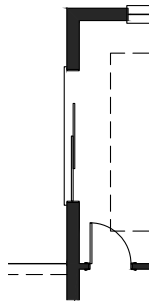


Avalon Building Corporation - License # BK395805  
We reserves the right to modify features, specifications and/or prices without notice or obligation.  
Floor plans, features and room dimensions vary per elevation. All square footages are approximate.  
PRICES ARE SUBJECT TO CHANGE WITHOUT NOTICE

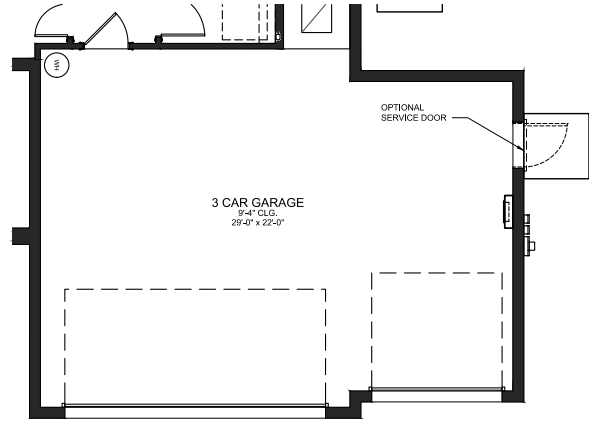
Avalon Building Corporation of Tampa Bay will be please to build this home on your homesite or on one of ours. Please see our literature for features, specifications, and additional information.



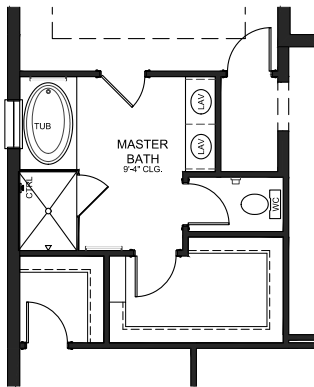
Optional Bonus Room



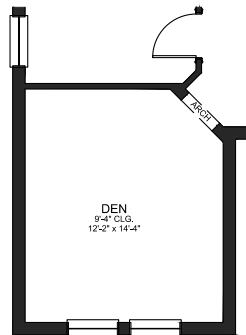
Optional Sliding Doors  
@ Opt Bonus Room



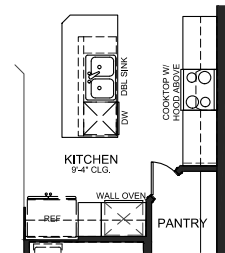
Optional 3 Car Garage



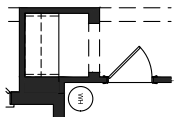
Optional Owner's Bath



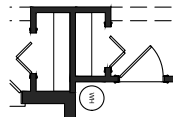
Optional Den



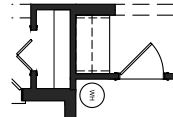
Optional Gourmet  
Kitchen



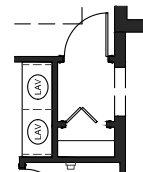
Optional Pocket Office



Optional Split Closet



Optional Drop Zone



Optional Closet  
@ Master Entry

OPT. 3RD CAR GARAGE	+203 S.F.
OPT. BONUS ROOM	+214 S.F.

(727) 942-1117 • TampaHomeBuilder.com



Avalon Building Corporation - License # BK395805  
We reserves the right to modify features, specifications and/or prices without notice or obligation.  
Floor plans, features and room dimensions vary per elevation. All square footages are approximate.  
PRICES ARE SUBJECT TO CHANGE WITHOUT NOTICE

Avalon Building Corporation of Tampa Bay will be please to build this home on your homesite or on one of ours. Please see our literature for features, specifications, and additional information.